



MONTHLY MEMBERSHIP PROGRESS REPORT

District 321C1

Results as of: 1/31/2015

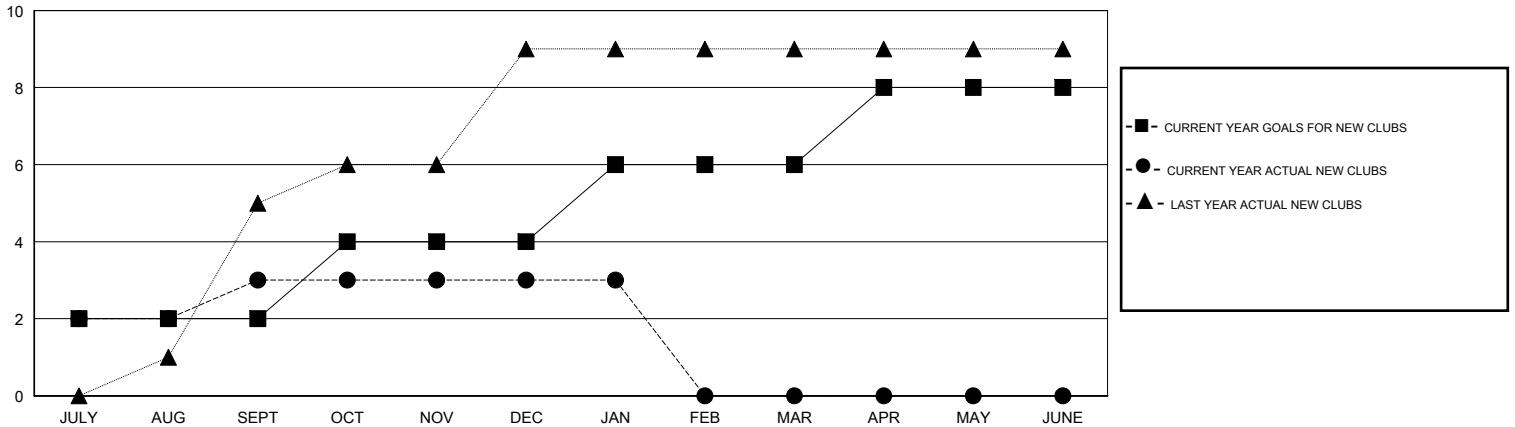
GMT: V S Kukreja

LOCATION INDIA

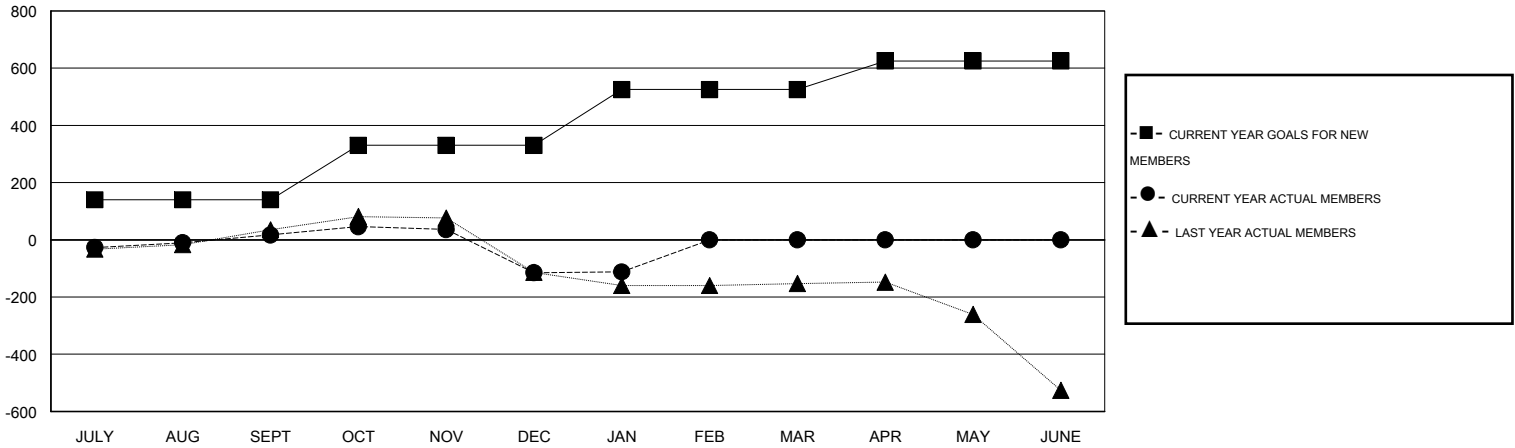
GMT CA 6

Clubs					Members				
RESULTS FOR 2014-2015					RESULTS FOR 2014-2015				
QUARTER	NEW CLUB GOAL	NEW CLUBS	DROPPED CLUBS	NET GAIN/LOSS	QUARTER	NEW MEMBER GOAL	CHARTER AND NEW MEMBERS ADDED	DROPPED MEMBERS	NET GAIN/LOSS
JULY/AUG/SEPT	2	3	0	3	JULY/AUG/SEPT	140	157	140	17
OCT/NOV/DEC	2	0	6	-6	OCT/NOV/DEC	190	81	213	-132
JAN/FEB/MAR	2	0	2	-2	JAN/FEB/MAR	195	61	58	3
APR/MAY/JUNE	2	0	0	0	APR/MAY/JUNE	100	0	0	0

GOALS AND ACTUAL NEW CLUBS CUMULATIVE



GOALS AND ACTUAL MEMBERS CUMULATIVE



DROPPED CLUBS: 8	46 CLUBS OF 140 ADDED 1 OR MORE NEW MEMBERS	GENDER DISTRIBUTION
		MALE 3,159 (79.15%)
		FEMALE 832 (20.85%)
DROPPED MEMBERS	CLICK HERE FOR HEALTH ASSESSMENT DATA	FAMILY UNIT MEMBERS 1,483
DECEASED 7		HEAD OF HOUSEHOLD 700
CLUB CANCELLED 152		NON-HEAD OF HOUSEHOLD 783
OTHER 252		
TOTAL 411		